



## Type 14 Pneumatic Diaphragm

### Standard Features (Sizes 1/2" - 2")

- Rugged solid thermoplastic construction for maximum corrosion resistance
- Uniquely designed body and bonnet together with diaphragms of new sealing designs by the-state-of-the-art computer aided analysis for superior sealing
- Weir design for excellent throttling
- NAMUR pad mount for easy installation of solenoid valves
- Full vacuum rated
- Bubble-tight sealing, even in applications such as slurries or those with suspended particles
- Bonnet seals to protect internals from corrosive environments
- Adjustable travel stop to prevent diaphragm from being over-tightened
- Bayonet structure to connect compressor and diaphragm for quick maintenance
- Integrally molded bottom stand for simple yet firm panel mounting
- Indicator at the top for valve position
- PVDF gas barrier, which protects EPDM backing cushion from gas permeation, is a standard for all valves with PTFE diaphragm
- Low profile

### Options

- Solenoid valves in all electrical type ratings and voltages
- Limit switches for interface with computers and other equipment
- Positioners: 3 - 15psi and 4 - 20mA inputs for throttling applications  
4 - 20mA output for interface with computers and other equipment
- Manual over-ride for air-to-spring

### Specifications

<b>Sizes:</b>	1/2" - 2"
<b>Body Materials:</b>	PVC, CPVC, PP and PVDF
<b>Bonnet Materials:</b>	PPG
<b>End Connectors:</b>	See Valve Materials
<b>Diaphragms:</b>	See Valve Materials
<b>Actuator Housing:</b>	PPG
<b>Type:</b>	Air-to-Air; Air-to-Spring
<b>Air Supply:</b>	60 psi (Recommended) 90 psi (Maximum)
<b>O-Ring End Connectors:</b>	EPDM

2" PVDF TYPE 14  
AIR-TO-AIR  
FLANGED  
DIAPHRAGM  
VALVE



1" PP TYPE 14  
AIR-TO-AIR TRUE  
UNION  
DIAPHRAGM  
VALVE

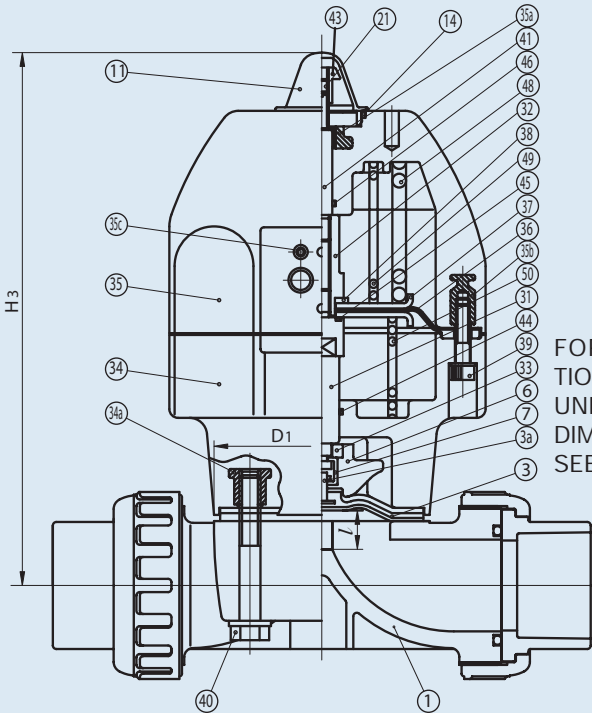
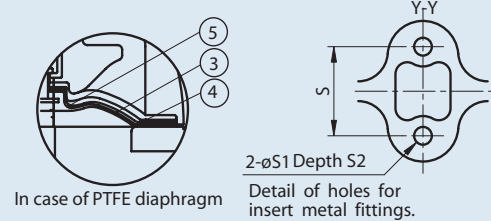
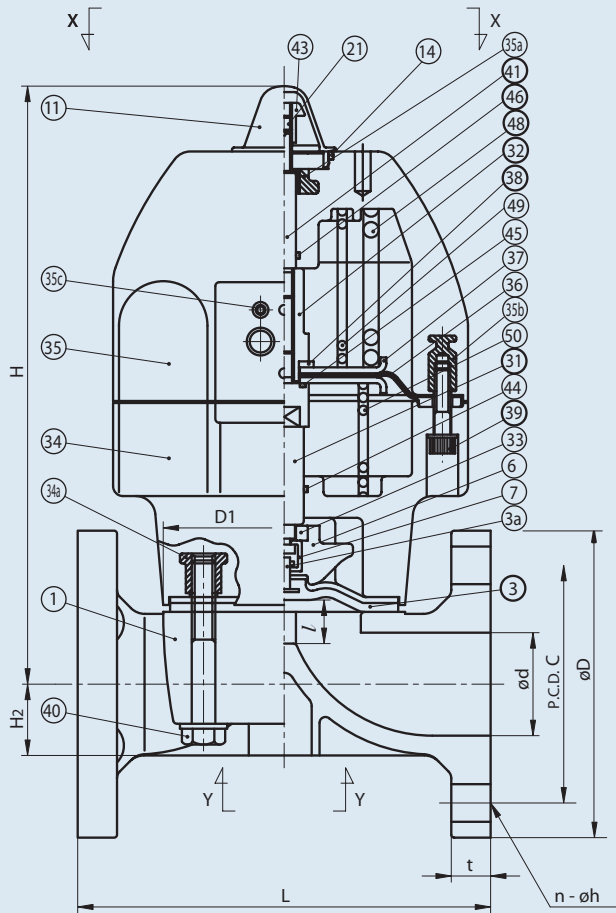


2" PVC TYPE 14  
AIR-TO-SPRING  
FLANGED  
DIAPHRAGM  
VALVE WITH NEMA IV  
DOUBLE LIMIT  
SWITCH

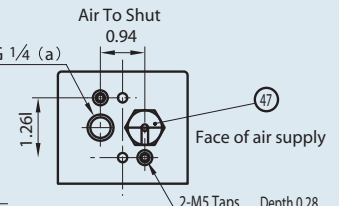
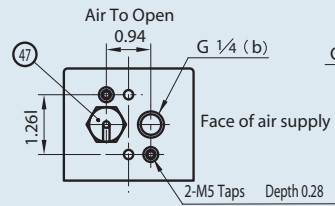
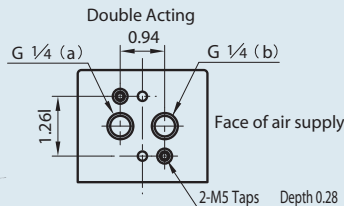
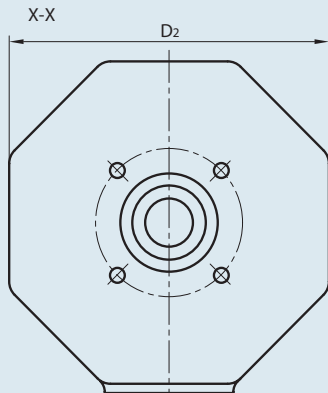


# Type 14 Pneumatic

# Diaphragm Valves



FOR ADDITIONAL TRUE UNION VALVE DIMENSIONS, SEE PAGE 67



**NOTE:**

- Operating Pressure: 60 psi – 90 psi
- Double Acting – Valve Open: Port (a) Exhaust  
Port (b) Supply  
Valve Shut: Port (a) Supply  
Port (b) Exhaust

- Air To Shut      Valve Open: Port (a) Exhaust  
Valve Shut: Port (a) Supply
3. The shape and appearance of the actual assembly may differ slightly in nominal size as compared with this drawing

## Dimensions Type 14 Pneumatic Flanged (Sizes 1/2" – 2")

## Weight/Cv

NOMINAL SIZE		ANSI CLASS 150															WT. (LBS.)		Cv	
INCHES	mm	d	C	D	n	h	D1	D2	l	L	t	H	H2	H3	S	S1	S2	A-A		A-S
1/2	15	0.63	2.38	3.50	4	0.62	2.13 x 2.60	5.12	0.39	4.25	0.43	7.32	0.49	7.32	0.98	0.28	0.51	4.80	5.12	4.8
3/4	20	0.79	2.75	3.88	4	0.62	2.13 x 2.60	5.12	0.39	5.88	0.51	7.40	0.57	7.40	0.98	0.28	0.51	5.11	5.78	5.3
1	25	0.98	3.12	4.25	4	0.62	2.64 x 3.15	5.12	0.47	5.88	0.59	7.60	0.73	7.60	0.98	0.28	0.51	6.00	6.50	8.5
1 1/4	32	1.26	3.50	4.62	4	0.62	2.64 x 3.15	5.12	0.47	6.38	0.63	7.76	0.89	7.76	0.98	0.28	0.51	6.50	7.00	11
1 1/2	40	1.57	3.88	5.00	4	0.62	4.25 x 4.25	6.85	0.83	6.94	0.63	11.54	1.08	11.54	1.77	0.35	0.59	12.82	14.29	26
2	50	2.05	4.75	6.00	4	0.75	4.84 x 4.84	6.85	0.98	7.94	0.79	11.89	1.42	11.89	1.77	0.35	0.59	13.00	14.50	43