

Type-21 Ball Valve Stem Extension Kit

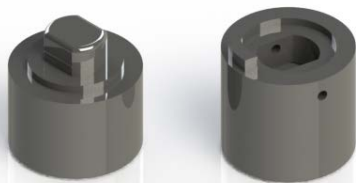
1/2" – 2" Type-21 Ball valves



Type-21 Ball Valve **Stem Extension Kits**

- Designed to fit PVC, CPVC, PP & PVDF T-21 manual valves
- Machined from solid PVC stock - ASTM D1784 Cell Class 12454
- For use with Schedule 40/80 PVC pipe
- 2-piece kits for field assembly using PVC solvent cement
- 4 unique kits cover 1/2" thru 2" size range
- Tight tolerances provides factory fit and finish
- Torque tested & approved for handle extensions up to 6' long
- In-Stock ready to ship
- Not intended for actuator use

The Type-21 ball valve stem extension kits are the ideal solution for accessing valves that are installed in out of reach locations. Machined from PVC bar stock to exact specifications, for a factory fit and finish. Available for valves 1/2" – 2", extension kits are supplied ready to be assembled and installed using your existing or a new Type-21 ball valve, and Schedule 40/80 PVC pipe. Cut your pipe to the desired length, solvent cement to the extension couplings, and install on the valve for a simple and effective stem extension.

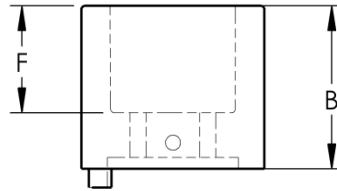
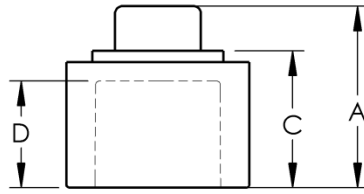


2-piece kit

Applications

- Insulated Piping systems
- Pools and Water Features
- Aquariums
- Water Treatment
- Irrigation
- Chemical processing

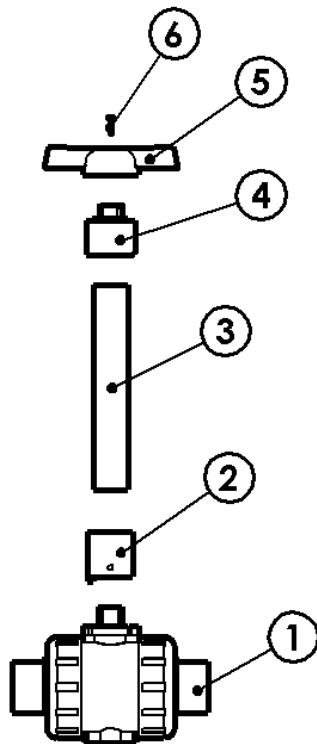
New Products



Part numbers and dimensional information

Valve Size		Part Number	Description	Pipe Size*	A	B	C	D	F
Inch	MM								
1/2	15	1000205	1/2" extension kit	1" Sch 40/80	1.895	1.760	1.330	1.125	1.125
3/4 - 1	20 - 25	1000210	3/4" - 1" extension kit	1" Sch 40/80	1.970	1.760	1.330	1.125	1.125
1-1/4	32	1000212	1-1/4" extension kit	1" Sch 40/80	2.010	1.760	1.330	1.125	1.125
1-1/2 - 2	40 - 50	1000220	1-1/2" - 2" extension kit	1" Sch 40/80	2.150	1.760	1.330	1.125	1.125

*Schedule 40 or 80 PVC pipe can be used, for maximum strength schedule 80 is recommended.



Parts	
1	Type-21 Ball Valve
2	Lower Coupling
3	Schedule 40/80 PVC pipe
4	Upper Coupling
5	Type-21 Handle
6	SS Cap Screw

Note: Extension kits include items 2,4 & 6 only. Items 1,3 & 5 not included.